

UNIQUE BUSINESS BENEFITS

SAVINGS

Can be self installed in less than 5 minutes. On a Fleet of 100 trailers that's a saving of over £5000. See the YouTube video 'Trailer-Eye Truck-Lite Install'

CONSTANT POWER

There are no batteries to go flat, so you can always find your trailer irrespective of who's coupled: your tractor, a sub-contractor, or an unauthorised tractor

REPORTING

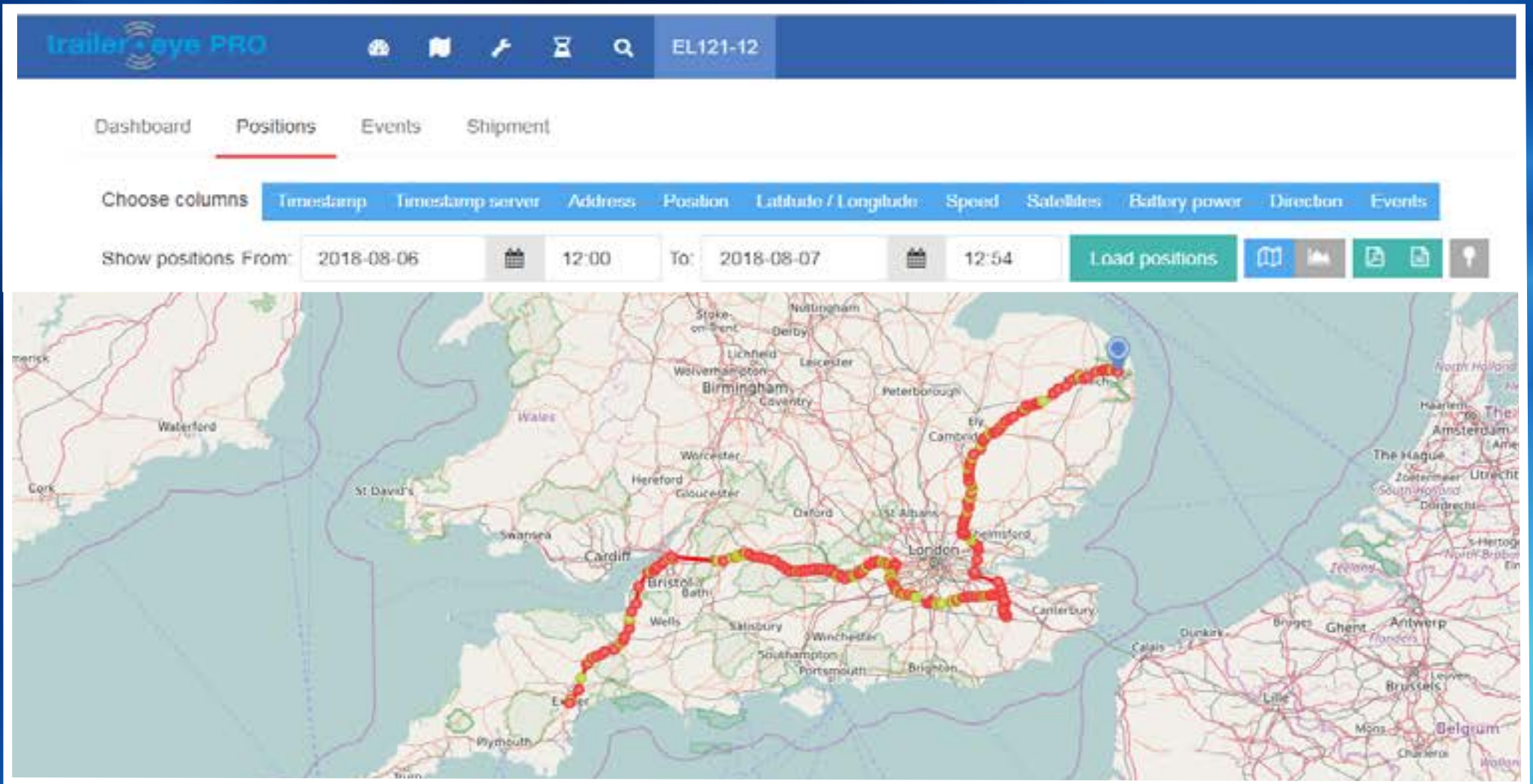
Full reporting suite as standard (See inside)

FREE API

Build your own reports, all data is accessible through the API

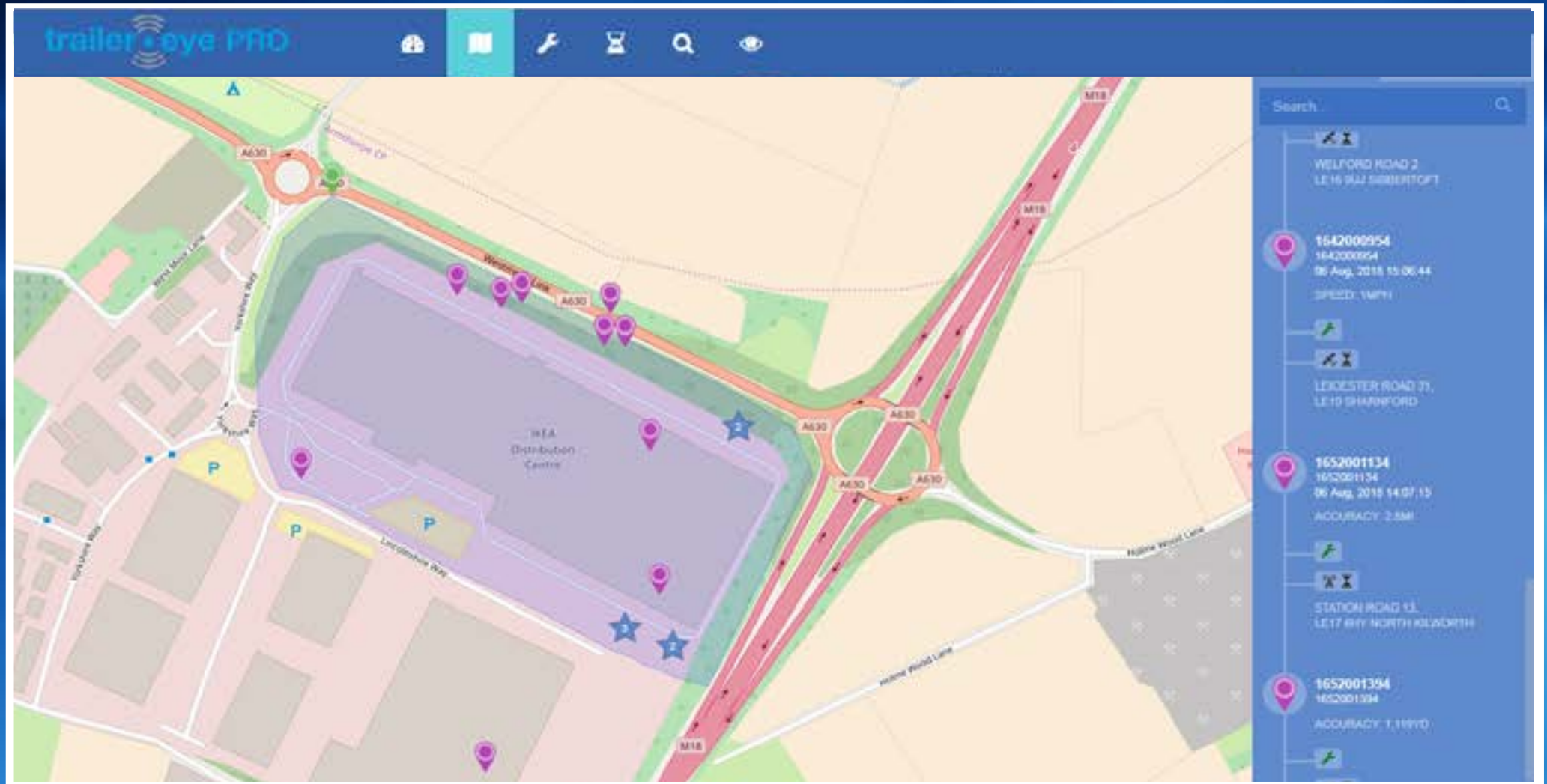


1. TRACK A TRAILER



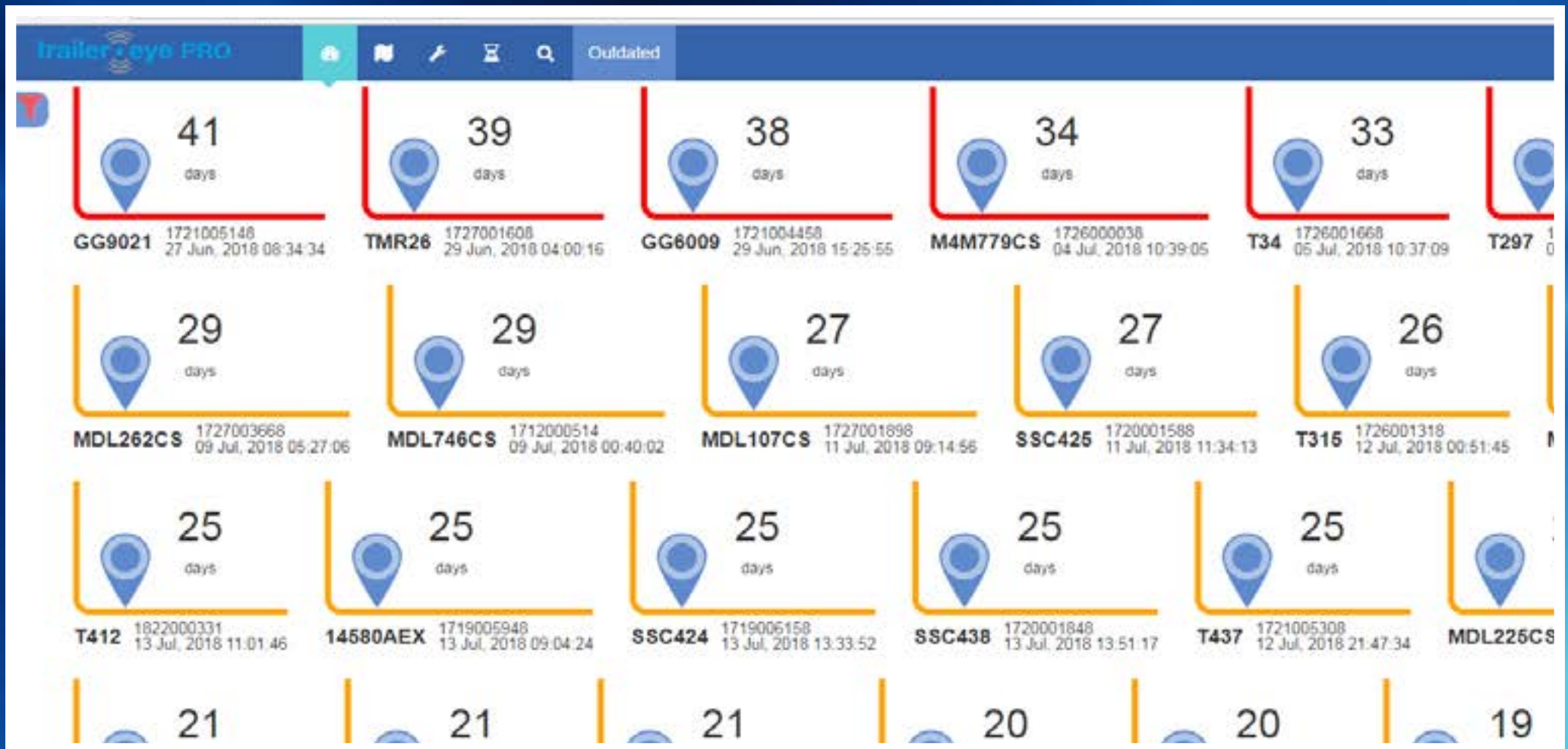
- Find your trailer irrespective of who's coupled to it
- Historical route replay by trailer showing time, date & location
- Google or satellite view of routes

2. GEOFENCE



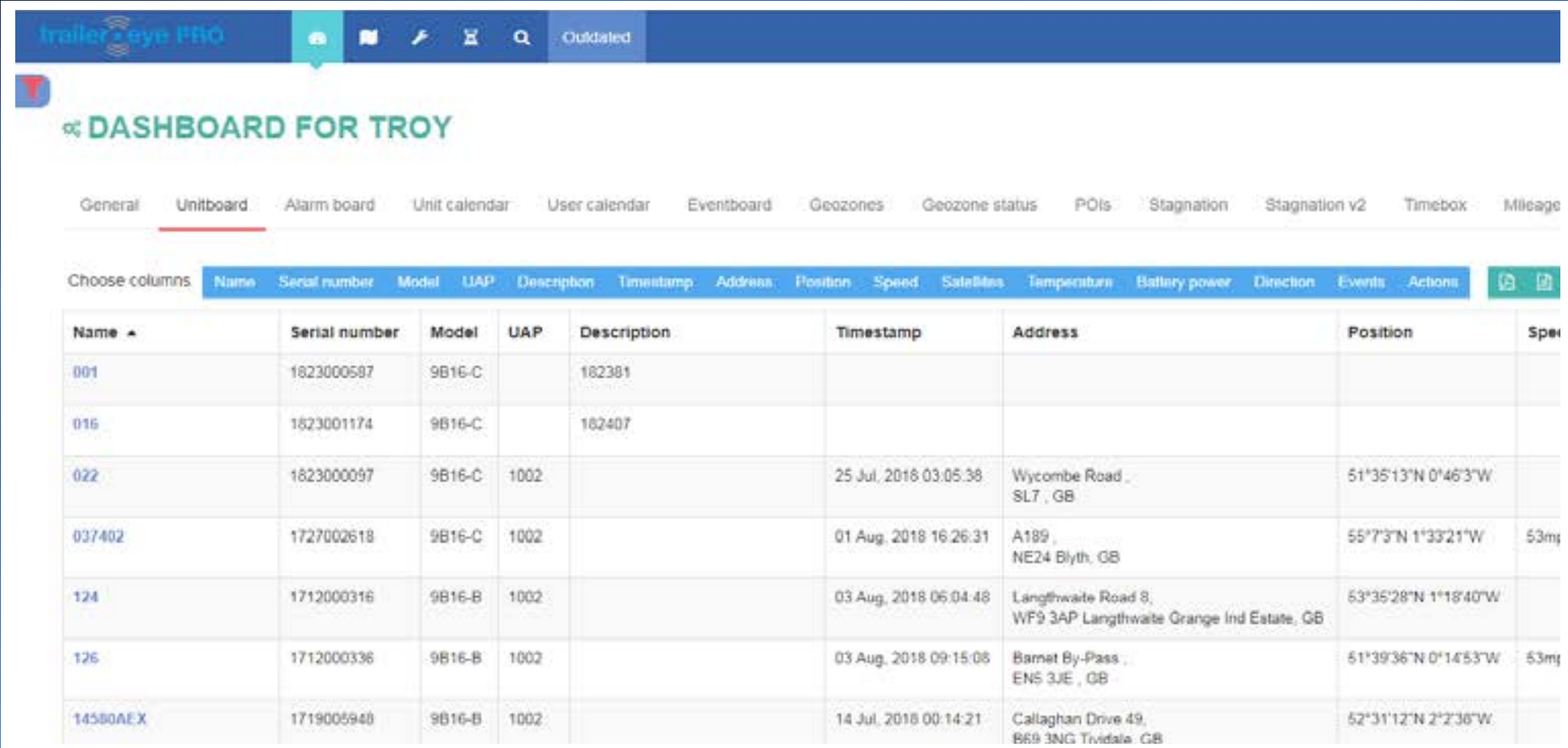
- Ability to draw a digital boundary around customer sites and depots
- Automatic alerts triggered by arrival/departure
- Location of all trailers within sites and depots
- Alert if trailer is in a restricted or no-go area
- Data can be used for conformance to prove trailer was at location

3. TRAILER MOVEMENT REPORT



- Trailer utilisation; how many days without movement
- Find out where the unused trailers are located
- What percentage of the trailer fleet was not utilised
- Utilisation by trailer type, are they fully used?
- Do I have the right trailers in the correct location at the right time?
- Is this causing needless trailer rentals?

4. TRAILER GPS MILEAGE

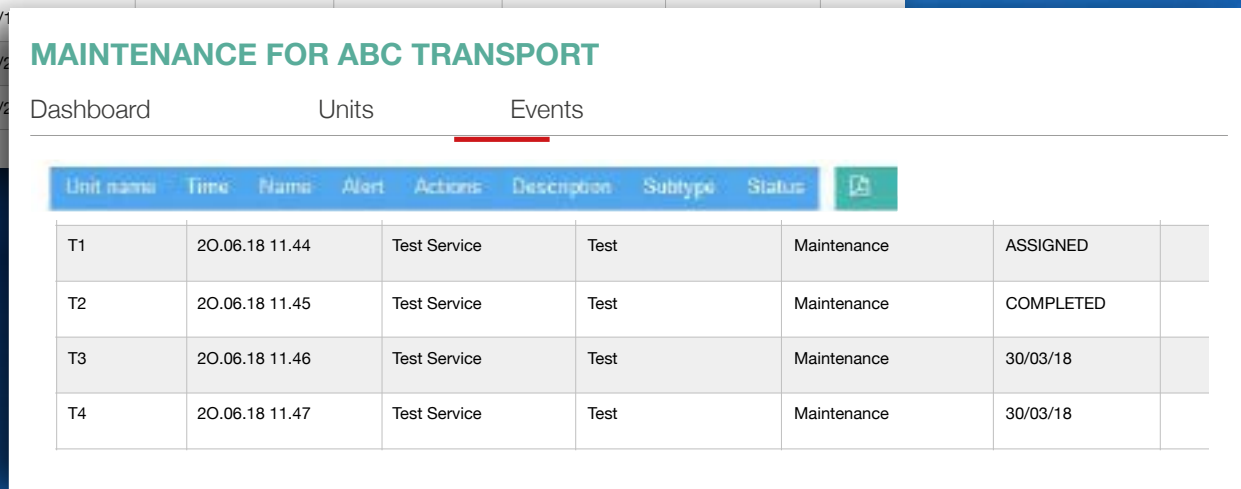
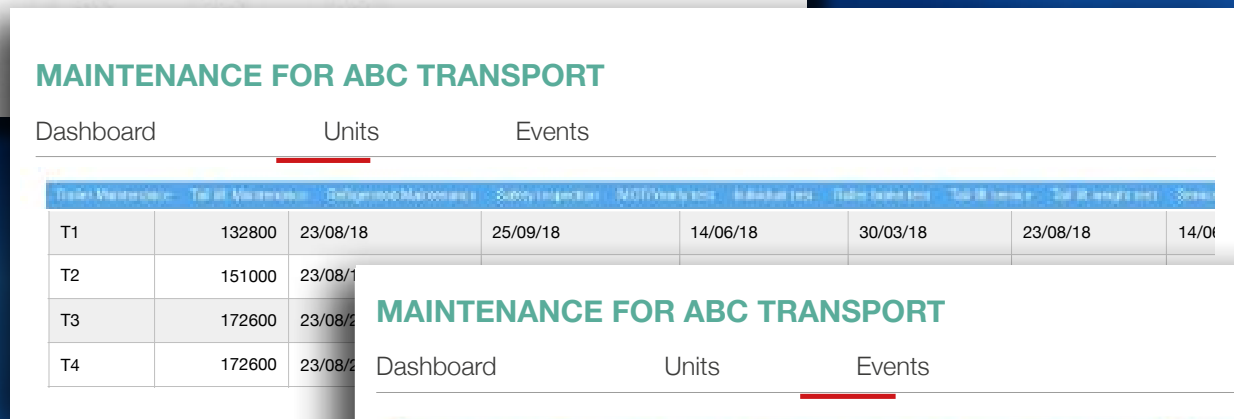
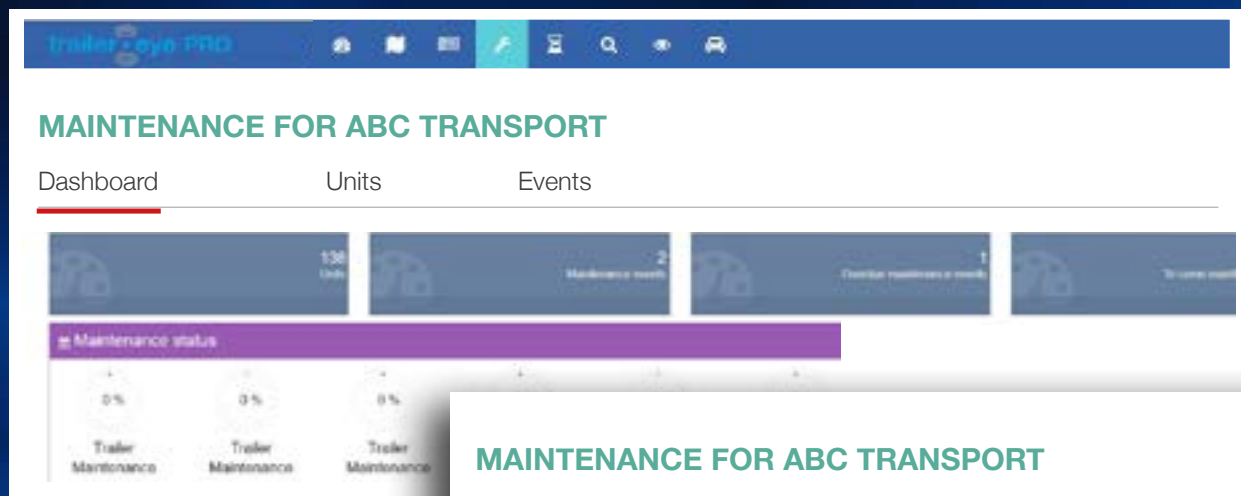


The screenshot shows the 'trailer eye PRO' dashboard for 'TROY'. The 'Mileage' tab is selected, displaying a table of tracking data. The table columns are: Name, Serial number, Model, UAP, Description, Timestamp, Address, Position, and Speed. The data rows show various units and their locations over time.

Name	Serial number	Model	UAP	Description	Timestamp	Address	Position	Speed
001	1823000587	9B16-C		182381				
016	1823001174	9B16-C		182407				
022	1823000097	9B16-C	1002		25 Jul, 2018 03:05:38	Wycombe Road SL7, GB	51°35'13"N 0°46'3"W	
037402	1727002618	9B16-C	1002		01 Aug, 2018 16:26:31	A189 NE24 Blyth, GB	55°7'3"N 1°33'21"W	53ms
124	1712000316	9B16-B	1002		03 Aug, 2018 06:04:48	Langthwaite Road 8, WF9 3AP Langthwaite Grange Ind Estate, GB	53°35'28"N 1°18'40"W	
126	1712000336	9B16-B	1002		03 Aug, 2018 09:15:08	Barnet By-Pass ENS 3JE, GB	51°39'36"N 0°14'53"W	53ms
14580AEX	1719005948	9B16-B	1002		14 Jul, 2018 00:14:21	Callaghan Drive 49, B69 3NG Trivdale, GB	52°31'12"N 2°2'36"W	

- Records trailer miles when coupled to your own tractor/sub-contractor
- Distances travelled shown by shift/session or time period
- Weekly/monthly mileage report
- Total trailer mileage report

5. MAINTENANCE MODULE



- Useful tool for Fleet Manager/Workshop
- Traffic light system. Easy to view status flagging service/maintenance points
- Schedule can be attached to calendars
- View overall maintenance position for fleet, identifies areas of concern

FREE API

- Integrate data into your existing FMS, why use 2 systems?
- Design your own reports using Fleet-Eye data
- Full documentation is available

In addition bespoke parameters can be made available subject to a technical and functional specification being made available. A quotation can then be raised